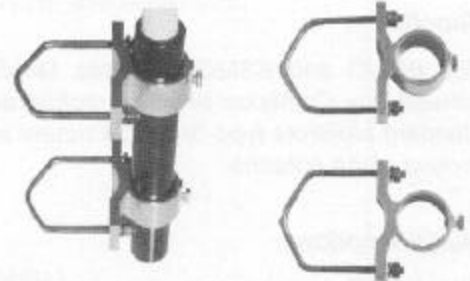


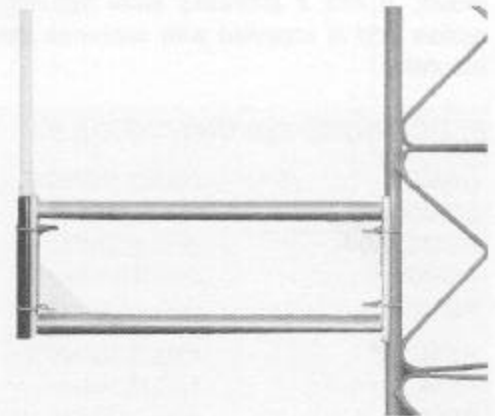


BSMNT1 Base Station Mount Kit: The BSMNT1 mount kit has been designed for use with the shorter BSXL series base station antennas. It consists of a single aluminum bracket with a stainless steel clampbolt that provides a quick and easy method of installation.

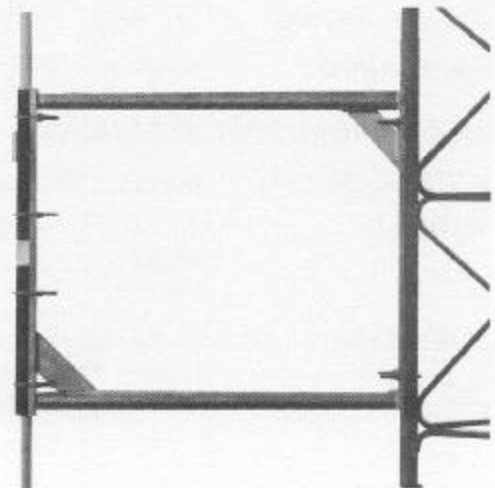
BSMNT2 Base Station Mount Kit: The BSMNT2 consists of two aluminum brackets with two stainless steel clampbolts that provide a quick and easy method of installation for BSXL series antennas that are over 30" long.



BSSMNT10 Base Station Side Mount Kit: This side mount kit has been designed specifically for use with the Comtelco BSXL series antennas. It is supplied with stainless steel 1 3/4" U Bolts that make installation on a Rohn 45 type tower an easy task. By using stainless steel strapping or larger U Bolts (not supplied) the installation of larger antennas on larger diameter tower legs is easily accommodated. Heavy duty construction and galvanized finish provide long lasting durability. The BSSMNT10 is 13" high and moves the antenna 24" away from the tower or mounting surface.



BSSMNT20 Base Station Side Mount Kit: This side mount kit is similar to the above unit but can be used when the need for increased gain requires the coupling of two antennas. The BSSMNT20 is 22" high and moves the antenna 24" away from the tower or mounting surface.



The BSSMNT10 and the BSSMNT20 Side Mount Kits can easily support most omnidirectional antennas weighing up to 50 lbs.